

Software Version : EasyBuilder Pro V5.07.02.127

Software Compatibility

EasyBuilder Pro no longer supports **Windows XP**.

New Features

EasyBuilder Pro

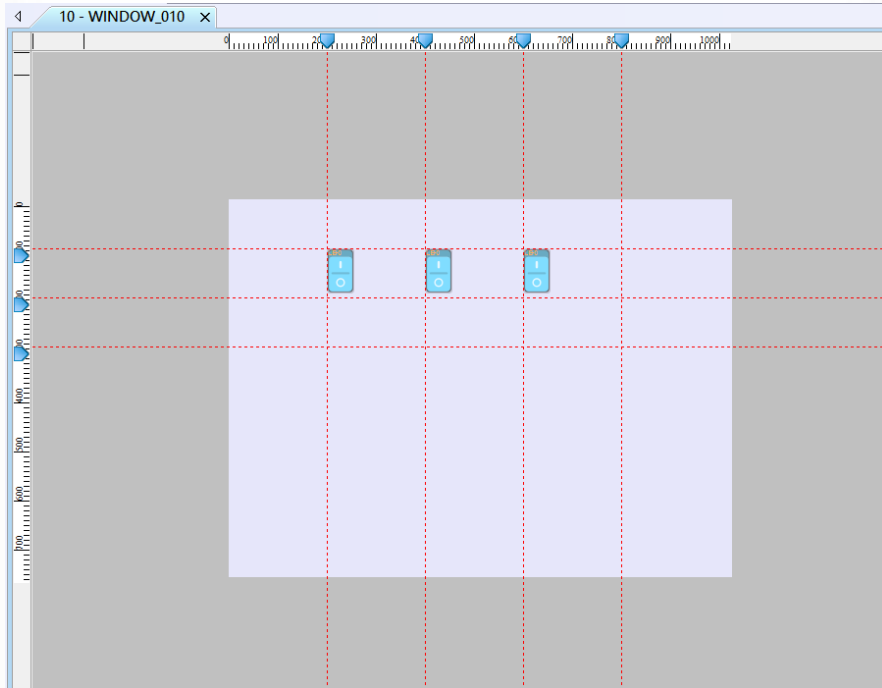
1. Added the following new features to the editing window in this release:

a. Non-display Area (grey area)

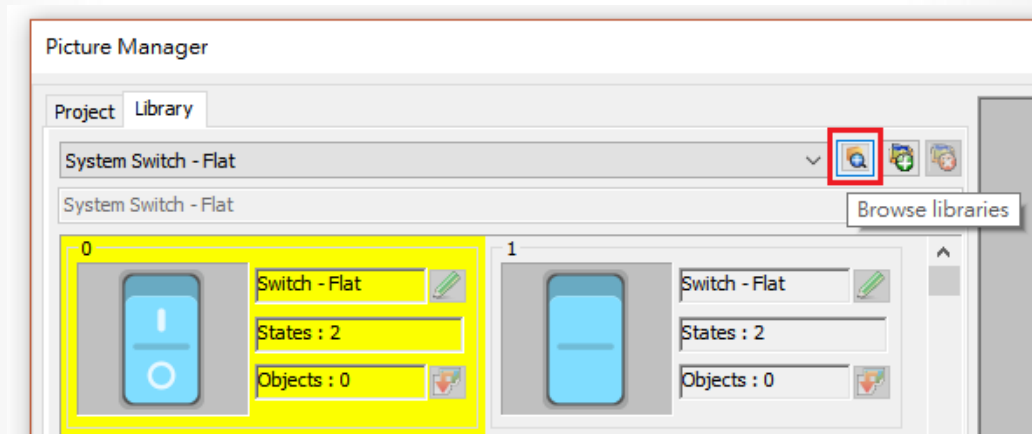
The non-display area refers to the grey area outside the editing area. Objects placed in the non-display area will not be visible on HMI. The invisible objects such as Timer can be placed in this area to avoid inadvertent overlapping with other objects in the editing area, which adds difficulty to project editing. The objects placed in the non-display area remain effective.

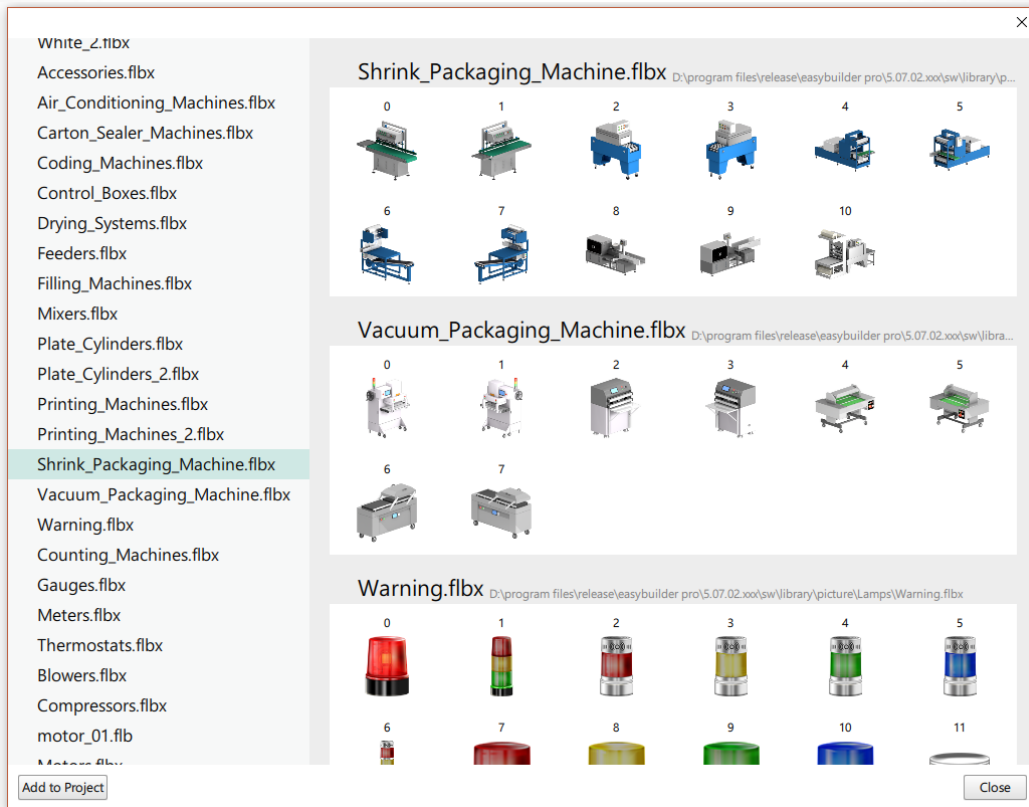
b. Ruler

Guides can be added, moved, or deleted from the ruler. Objects will automatically snap to the guides when moved or resized.



2. Added support for browsing all items in a designated Picture Library path. The library paths are set in [Option] » [Preferences] » [Picture Shape Library Search Path].






3. Added the following system libraries:

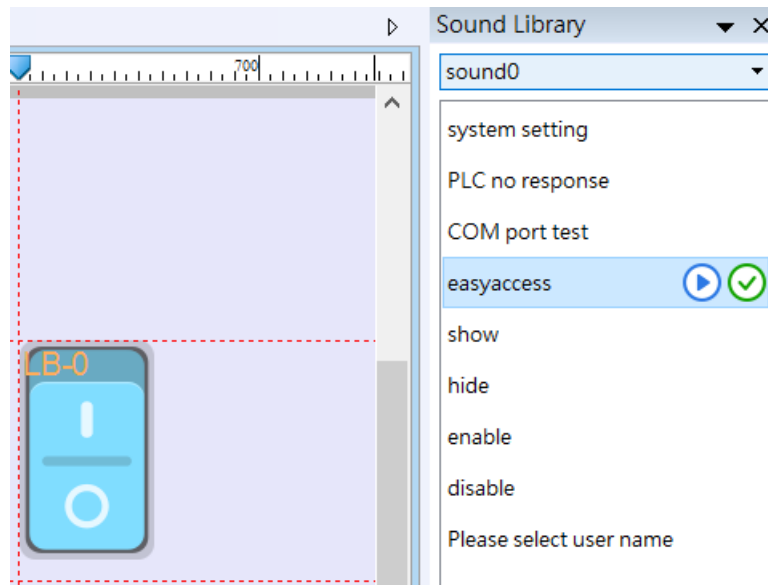
- | | |
|-----------------------------|--------------------------------|
| System Check Box – Flat | System Meter – Crystal |
| System Check Box – Standard | System Meter – Gradient |
| System Icon - Flat | System Meter – Standard |
| System Radio Button – Flat | System Radio Button - Standard |



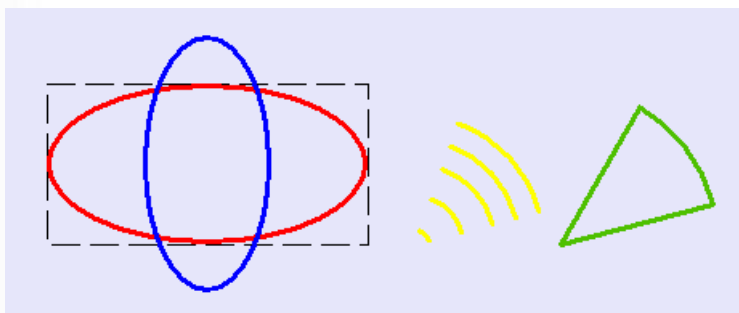
4. Added tips window that shows at startup and walks users through the new features and usage examples.

5. Added quick access toolbar for Sound Library that can be enabled / disabled in View menu. The toolbar not only supports quick browsing for Sound Library, but also allows users to change an object’s sound easily. When an object is selected, double click on the  icon of a sound to apply the sound to the

object. Additionally, changing sound for multiple objects at a time is also possible.

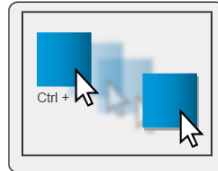


6. Added support for Import, Export, Copy, Paste, Paste (Add Mode) in Data Sampling settings window. The format of the exported/imported data log is CSV.
7. Added support for selecting event category when backing up historical events (CSV file) into SD card or USB disk.
8. Added support for the following features for eMT/iE/XE/mTV Series:
 - a. Drawing Ellipse, Ellipse from Rectangle, Arc and Pie using Dynamic Drawing object.



- b. Exporting recipe database to a remote cMT Series HMI using Import/Export object.

- c. MQTT Topic Subscriber.
- 9. Added support for object quick copy. It can be carried out by pressing and holding Ctrl key on the keyboard while an object is selected, and then drag the cursor to a new location where the object will be created.



- 10. Added support for Amazon AWS IoT for MQTT.
- 11. Increased the maximum number of Scheduler objects to 64.
- 12. Added system registers LB-10101 ~ LB-11856 that show connection state of Ethernet PLC of different station number.

LB-10101 – LB-10356: Connection state of station 0 to 255 of PLC 4

LB-10400 – LB-10656: Connection state of station 0 to 255 of PLC 5

LB-10700 – LB-10956: Connection state of station 0 to 255 of PLC 6

LB-11000 – LB-11256: Connection state of station 0 to 255 of PLC 7

LB-11300 – LB-11556: Connection state of station 0 to 255 of PLC 8

LB-11600 – LB-11856: Connection state of station 0 to 255 of PLC 9

Corrections

EasyBuilder Pro

- 1. Changed default project file name to EBProjectX (where X=1, 2, 3...).
- 2. Fixed an issue where HMI may not be able to restore connection with MQTT server using DNS as destination when MQTT server's IP address has changes.
- 3. Fixed an issue where pictures cannot be used in Fast Selection Window.
- 4. Fixed an issue where String2Unicode() macro function cannot correctly convert strings to Unicode.
- 5. (cMT Series) Fixed an issue where passwords are not masked in asterisks (*) when using a user-defined keyboard to enter data in an ASCII object.

6. (cMT Series) Combined the event trigger time, acknowledge time, and return to normal time into one row in the CSV file of Event Log.

Utility Manager

1. Disabled downloading data log to HMI.

Drivers

1. Added **Mitsubishi R04 (Ethernet)** driver.
2. Added **OPTO22 CONT Protocol (Ethernet)** driver.
3. Added support for using variables as address parameter in Macro for **CANB2.0A/2.0B General and SAE J1939** driver.
4. Supported address tags generation by importing project files of SIMATIC STEP 7 (TIA Portal) (*.ap12~14) when using the **S7-1200/S7-1500 (Absolute Addressing) (Ethernet)** driver. Added system registers LW-11472 ~ LW-11495, allowing viewing and dynamic change of AMS NetId of **Beckhoff** PLC, where it takes the form of ID0:ID1:ID2:ID3:ID4:ID5.

LW-11472 ~ LW-11473: Beckhoff AMS NetId ID0 – ID5 of PLC 4
LW-11478 ~ LW-11483: Beckhoff AMS NetId ID0 – ID5 of PLC 5
LW-11484 ~ LW-11489: Beckhoff AMS NetId ID0 – ID5 of PLC6
LW-11490 ~ LW-11495: Beckhoff AMS NetId ID0 – ID5 of PC7